

PLCU/HLCU series Upper Flange Lever Clamping Cylinders

產品說明：

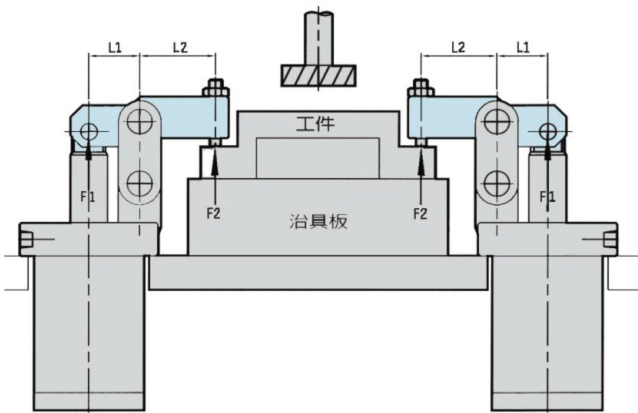
- 上法蘭式橫桿缸使用于位置較低的加工件
- 相同直徑的缸比轉角缸能產生較大的夾持力
- 五種活塞直徑: 25, 32, 40, 50, 63
- 油路板式可同時共享于管接式
- 上端斜面設計有利切屑排除
- 複動作動形式

Application

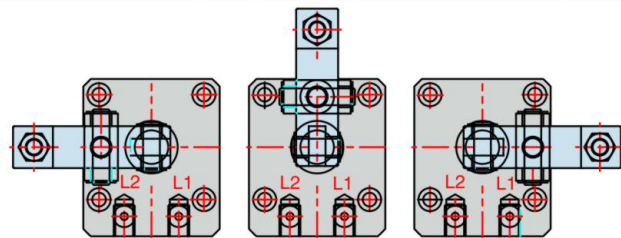
- Threaded body allows this cylinder to be buried in the fixture to minimize the required area, and make this cylinder ideal for clamping low profile workpiece.
- Produce larger clamp force than the swing-clamping cylinder of the same bore diameter.
- Available in five bore diameters: $\phi 25$, $\phi 32$, $\phi 40$, $\phi 50$, $\phi 63$.
- A combination of piping mounting or manifold mounting can be applied in one cylinder.
- Cylinder top surface is inclined to allow easier elimination of iron slag.
- Double acting cylinder.

材質說明：Material

- PLCU/HLCU本體使用高級鋁合金,及表面硬化處理
- HLCU-F油壓部分採用碳鋼氮化處理
- 活塞及桿採用鋼材電鍍研磨
- The main body of PLCU/HLCU is made of aluminum alloy, and the surface is hard membrane treated.
- The main body of HLCU-F is made of carbon steel, and the surface is Hard membrane treated.



HLCU	—	40	F	C
機種 Model		活塞直徑 Bore	油路板式 Manifold	壓板方向 Arm dir.
PLCU: 空壓 HLCU: 油壓	Pneumatic Hydraulic	25,32,40 50,63	F: Manifold F: 油路板式 空白: 管接式 Blank: Line-Type	C-中心 center L-左 left R-右 right



L-ARM C-ARM R-ARM P=25kg/cm²

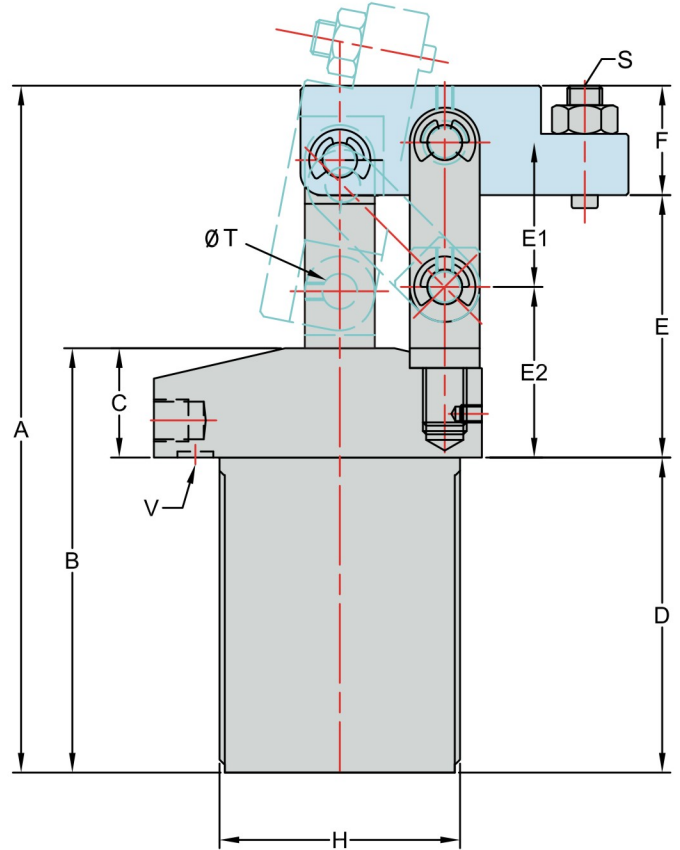
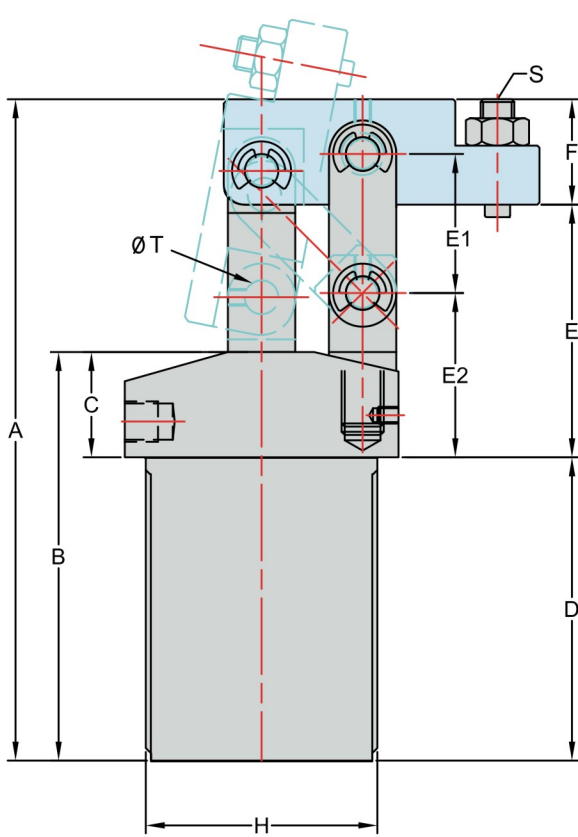
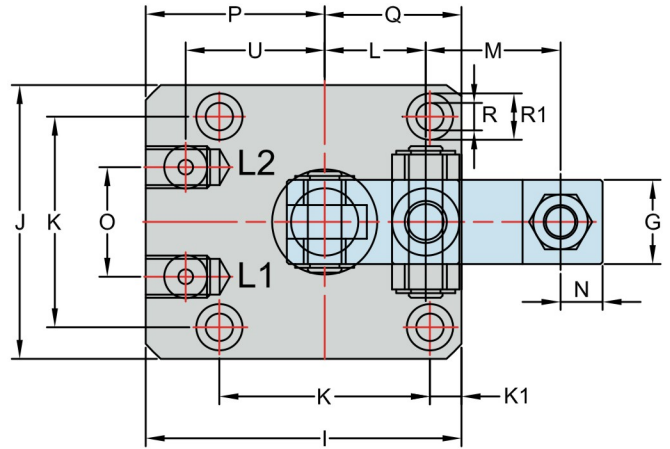
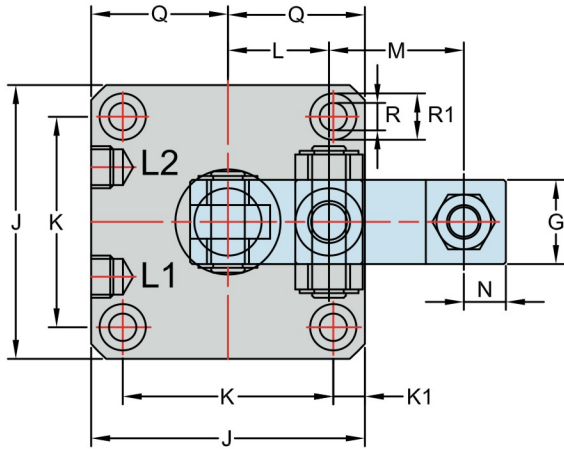
理論出力表: $F1 = PXA$ $F1XL1 = F2XL2$

活塞直徑 Bore	25	32	40	50	63
受壓面積 (cm ²) A Section Area	4.91	8.04	12.57	19.63	31.17
F1 推力 (kgf) Push Force	122.75	201.00	314.25	490.75	779.25
L ₁	18	22	24	27.5	32
力距 (kg.m) Torque	2.21	4.42	7.54	13.49	24.94
L ₂	23	30	32	36	42
F2 最小夾持力. (Kgf) Min Force	96	147	236	375	594

unit 單位: mm

管接式: Line Type

油路板式: Manifold Type



PLCU-Pneumatic 空壓
HLCU-Hydraulic 油壓

HLCU-xxF 油壓油路板式
Hydraulic with manifold

PLCU/HLCU series Upper Flange Lever Clamping Cylinders

空壓管接式 Hydraulic line type	PLCU-25	PLCU-32	PLCU-40	PLCU-50	PLCU-63
油壓管接式 Air line type	—	HLCU-32	HLCU-40	HLCU-50	HLCU-63
油壓油路板式 Hydraulic manifold type	HLCU-25F	HLCU-32F	HLCU-40F	HLCU-50F	HLCU-63F
一般使用壓力 normal pressure	空壓4-10 kg/cm ² 油壓20-70 kg/cm ²				
缸體運行方式 acting type	複動 double acting				
夾緊行程 clamping stroke	22	28	30	30	30
活塞直徑 bore dia.	ø25	ø32	ø40	ø50	ø63
活塞杆徑 piston rod dia.	ø14	ø16	ø16	ø20	ø20
A	128.5	149.5	157.5	174	179
B	86.5	97.5	97.5	104	105
C	25	25	25	25	25
D	61.5	72.5	72.5	79	80
E	50	57	60	65	69
F	17	20	25	30	30
G	16	18	20	22	22
H	M40x1.5	M50x1.5	M55x1.5	M65x1.5	M80x1.5
I	60	70	75	88	108
J	50	60	65	75	90
K	37	45	50	58	70
L	18	22	24	27.5	32
M	23	30	32	36	42
N	7	8	10	14	14
O	23	23	26	32	35
P	35	40	42.5	50.5	63
Q	25	30	32.5	37.5	45
R	5.5	6.5	6.5	8.5	8.5
R1	9	11	11	14	14
K1	6.5	7.5	7.5	8.5	10
E1	26	33	33	44	48
E2	34.5	36	39	40	40
T	6	6	8	10	10
S	M6x1.0	M8x1.25	M8x1.25	M12x1.75	M12x1.75
L1(夾緊clamp)	空壓	G1/8	G1/8	G1/8	G1/8
L2(放鬆unclamp)	油壓				
U	26	30.5	33	38	48
V(O-RING)	P7	P7	P7	P7	P7
weight 重量 kg	0.6	1.0	1.2	2.1	2.4
	—	1.0	1.2	2.1	2.4
	1.2	1.93	2.25	3.2	6.5

unit 單位: mm